

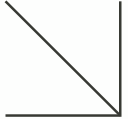


# CRB Cleaning Systems

a CRB International Company

## TM3-TM4-TM5 CRB MACHINE INSTRUCTION MANUAL

Manual de Instrucciones Máquina de limpieza CRB TM3-TM4-TM5



**CRB Clean Inc.**  
EQUIPMENT SUPPLY

304 S. Jones Blvd #1180, Las Vegas NV 89107  
info@crbclean.com  
Phone 1-954-495-4098  
Toll-Free: 1-800-704-0527  
[www.crbclean.com](http://www.crbclean.com)

# CONTENT



Testimonial and educational content

Warranty

Warnings and safety precautions

How to assemble the machine

Parts blueprint TM3–TM4–TM5

Transport trolley TM3–TM4–TM5

Starting the machine

Motor safety Switch

Spare parts TM3/TM4/TM5

TM3/TM4/TM5 Wire diagram

Spare parts list

# Testimonial

"Great quality products and excellent customer service. Looking forward to doing more business with them".

-Daniela Cano (Owner of Cleaning Depot).




# Educational Content

## Join to our page & Facebook group

This type of content will help you to improve the way you clean and make money. It is hard to find a good source about cleaning with a CRB in a neutral tone. CRB low moisture cleaning is growing and is becoming the go-to cleaning method for carpets and hard floors in the future.

Este tipo de contenido lo ayudará a mejorar la forma en que limpia y gana dinero. Es difícil encontrar una buena fuente sobre la limpieza con un CRB en un tono neutro. La limpieza de baja humedad CRB está creciendo y se está convirtiendo en el método de limpieza para alfombras y pisos duros.

 **crbcleaningsystems**  
**crb cleaning systems**  
**used & refurbished**  
**machines**

## Subscribe to our youtube channel

Find educational content with posts about our machines and products. This will help the users of our products, which will make our products, which will make our products more effective and last longer.

Encuentre contenido educativo con publicaciones sobre nuestras máquinas y productos. Esto ayudará a los usuarios de nuestros productos, lo que los hará más efectivos y durarán más.

 **crbcleaningsystems**

## Connect to our business network on LinkedIn

We look forward to the bright future of our industry while it trends towards an eco-friendly world.

Esperamos con ansias el futuro brillante de nuestra industria mientras tiende hacia un mundo ecológico.

 **crbcleaningsystems**



## WARRANTY CERTIFICATE

Model \_\_\_\_\_ Date \_\_\_\_\_

Serial number \_\_\_\_\_

All CRB Clean Inc machines come with a 1/2 limited (1 year on the machine and 2 years on the motor). The warranty applies to all original CRB Clean Inc Extraction Cleaning Machines used in the U.S. when purchased from a CRB Clean Inc Authorized Distributor, Affiliate or directly from the CRB Clean Inc United States, machines are warranted by the local Distributors.

This machine is warranted to be free from defects in materials and workmanship when used solely for the purpose of pile lifting, encapsulation, agitation, compound of carpets or hard floors using. This Warranty applies to the original purchaser only. If the machine is sold, transferred, traded or lost, this Warranty shall be void and no longer valid.

In the event of failure of a part or parts within 1 year of the machine or 2 years of the motor from original purchase date and upon inspection by the Manufacturer or Manufactureris Representative to determine that failure is due to defective materials or workmanship, such defective will be repaired or replaced at the Manufactureris expense.

This warranty neither covers damages resulting from catastrophe, fault, or negligence of third parties including, but not limited to, user neglect or abuse, or the shipping damage, nor does it cover expendable parts subject to normal wear. Any modification to the equipment by the customer will void the Warranty and CRB Clean Inc will have no further obligation to the Purchaser under this Warranty. Parts that are not considered under warranty and are classified as maintenance/wear and tear include, but are not limited to:

- |                 |                      |                    |
|-----------------|----------------------|--------------------|
| ñGears.         | ñRubber bumpers.     | ñScrews.           |
| ñBrushes.       | ñHandle stop.        | ñProtective plate. |
| ñCapacitors.    | ñHandle stop spring. | ñBrush axles.      |
| ñBall bearings. | ñCable holders.      | ñOutlet cover.     |

If one of the maintenance/wear and tear parts breaks within 90 days, we kindly request that you provide the manufacturer with the serial number and a detailed report of the issue before any action is taken. A response will be provided within 1-2 business days.



304 S. Jones Blvd #1180,  
Las Vegas NV 89107  
Phone: 1-954-495-4098  
Toll-Free: 1-800-704-0527



# **WARNINGS**

ADVERTENCIAS

# Important precautions and safety information: Review these instruction before operation of equipment

Precauciones importantes e información sobre seguridad: revisar estas instrucciones antes de operar el equipo

- 1.** **Keep out of reach of children**  
Mantener fuera del alcance de los niños
- 2.** **Close supervision is necessary when any appliance is used by or near children.**  
Se requiere supervisión cuando cualquier aparato sea utilizado por, o cerca de niños.
- 3.** **Do not allow the carpet and hard floor cleaning machine to be used as a toy or to run attended at any time.**  
No permitir que la alfombra y piso duro de la máquina de limpieza sea para ser utilizado como un juguete o para ser usado sin supervisión.
- 4.** **Keep hair, loose clothing, fingers, feet and all parts of body away from openings, rotating brushes and other moving parts.**  
Mantener el cabello, la ropa suelta, los dedos, los pies y todas las partes del cuerpo alejados de las aberturas, cepillos giratorios y otras partes móviles.
- 5.** **Do not operated machine with bare feet or when wearing open toed shoes or sandals.**  
No hacer uso de la maquina con los pies descalzos o con zapatos o sandalias de punta abierta.
- 6.** **Do not pick up anything that is burning or smoking such as cigarettes, matches or hot ashes.**  
No recoger nada que esté ardiendo o desprendiendo humo como cigarrillos, fósforos o cenizas calientes.
- 7.** **Do not use to pick up flammable or combustible materials such as but not limited to; gasoline or alcohol or use in areas where they may be present.**  
No utilizar para recoger materiales inflamables o combustibles tales como, pero no limitados a; gasolina o alcohol en áreas en las que pueden estar presentes.
- 8.** **Avoid picking up hard, sharp objects with the cleaner, since they may damage the machine.**  
Evitar recoger objetos duros o afilados con la aspiradora, ya que pueden dañar la máquina.
- 9.** **Always turn off the machine before connecting or disconnecting the power cord to the power outlet.**  
Apagar siempre la máquina antes de conectar o desconectar el cable a la toma de corriente.
- 10.** **Use extra care when cleaning stairs.**  
Tener cuidado especial al limpiar escaleras.
- 11.** **Do not put any objects into openings or near brushes.**  
No colocar ningún objeto en las aberturas o cerca de los pinceles.
- 12.** **Do not use the machine with any blocked opening; keep free of dust, lint, hair or anything that may reduce brush action.**  
No utilizar la máquina con ninguna abertura bloqueada; manténgala libre de polvo, pelusa, pelo o cualquier cosa que pueda reducir la acción del cepillo.
- 13.** **Do not pull or carry by cord, use cord as a handle, close door on cord or pull cord around sharp edges or corners.**  
No tirar ni llevar el cable como manillar, usar el cable como un asa, cerrar la puerta sobre el cable o tirar del cordón alrededor de bordes o esquinas afiladas.
- 14.** **Do not run the machine over the cord and keep it away from heated surfaces.**  
No dejar pasar la maquina por encima del cable, mantenerlo alejado de superficies calientes.
- 15.** **Always disconnect cord from electrical outlet before servicing the cleaner or when not in use.**  
Desconecte siempre el cable de la toma eléctrica antes de reparar el limpiador o cuando no esté en uso.
- 16.** **Unplug the machine when not in use after all controls have been turned off.**  
Desenchufe la máquina cuando no esté en uso después de que todos los controles se hayan apagado.

**17.** Use only the carpet and hard floor cleaning machine for its intended uses described in the instructions. Use only attachments recommended by CRB Clean Inc, others may cause hazards. Always wash hands after handling chemicals or cleaning materials.

Utilizar la máquina de limpieza CRB sólo en alfombras y en pisos duros, esta es únicamente para sus usos descritos en las instrucciones. Utilizar sólo los accesorios recomendados por CRB Clean Inc, otros pueden causar peligro. Siempre lávese las manos después de manipular productos químicos o materiales de limpieza.

**18.** Do not use with the damaged with damaged cord or plug. If machine has been dropped, damaged, left outdoors or dropped into water, take it to CRB Clean Inc service center or authorized CRB Clean Inc warranty service dealer.

No utilizar con el cable o enchufe dañado. Si la máquina se ha caído, dañado, llevarlo al centro de CRB Clean Inc donde pueda contar con un distribuidor autorizado de servicio de garantía.

**19.** To unplug, grab the plug not the cord and disconnect and never handle plug with wet hands.

Para desenchufar, tome el enchufe, no el cable, desconecte y nunca toque el enchufe con las manos mojadas.

**Follow these instructions to reduce the risk of fire, electric shock or injury**  
Siga estas instrucciones para reducir el riesgo de incendio, descargas eléctricas o lesiones

## Information

Please enter the COMPLETE model and serial numbers in the spaces provided.

Model \_\_\_\_\_

Serial number \_\_\_\_\_

**Hitch:** Attach your sales receipt to the owner's manual/ instructions. Verification of date of purchase may be required for the warranty service of your CRB Clean Inc product.

**Sugerencias:** Adjunte su recibo de compra a este Manual del propietario. Para obtener el servicio de garantía de su producto CRB Clean Inc. Puede requerirse la verificación de la fecha de compra.

Be sure to fill out and return the product registration card included with your cleaning machine. (see back cover)

Asegúrese de completar y devolver la tarjeta de registro del producto incluida con su máquina de limpieza. (ver contraportada)



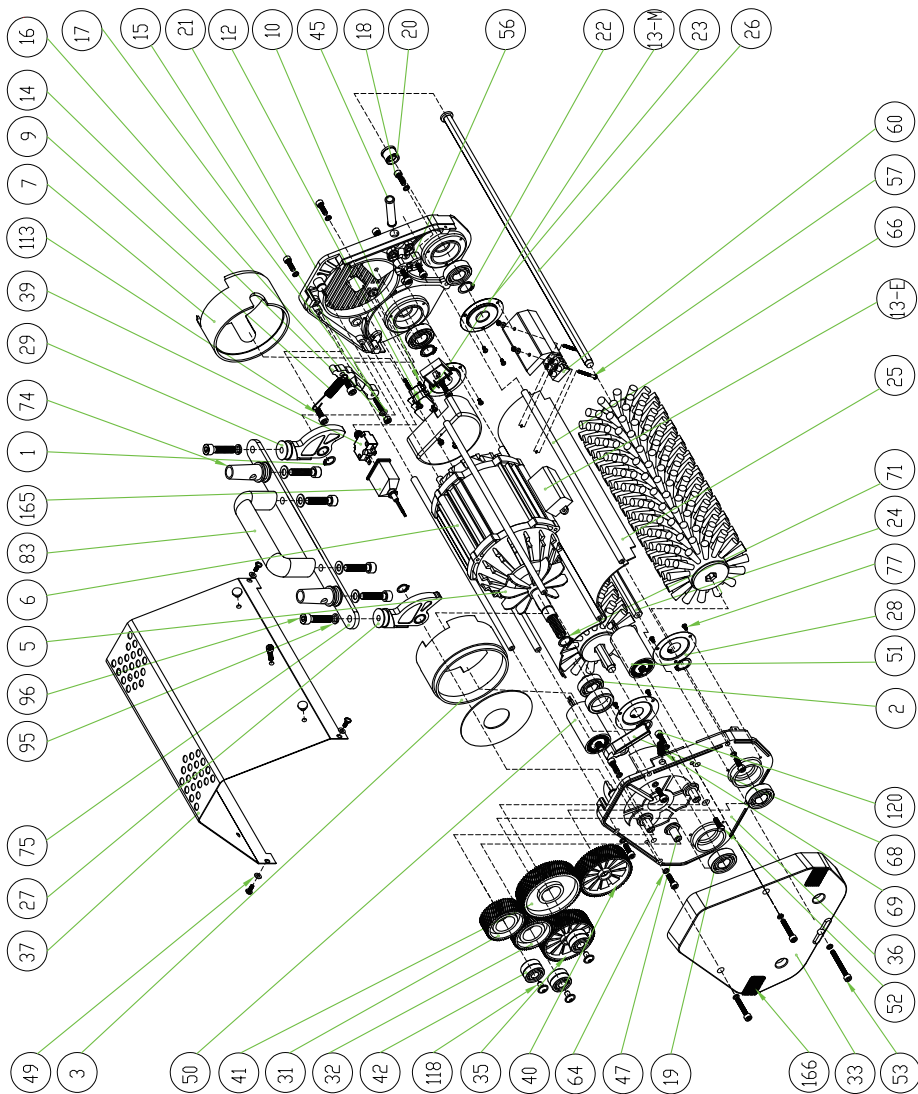
# Transport trolley TM4 - TM5

## Carretilla de transporte TM4 - TM5



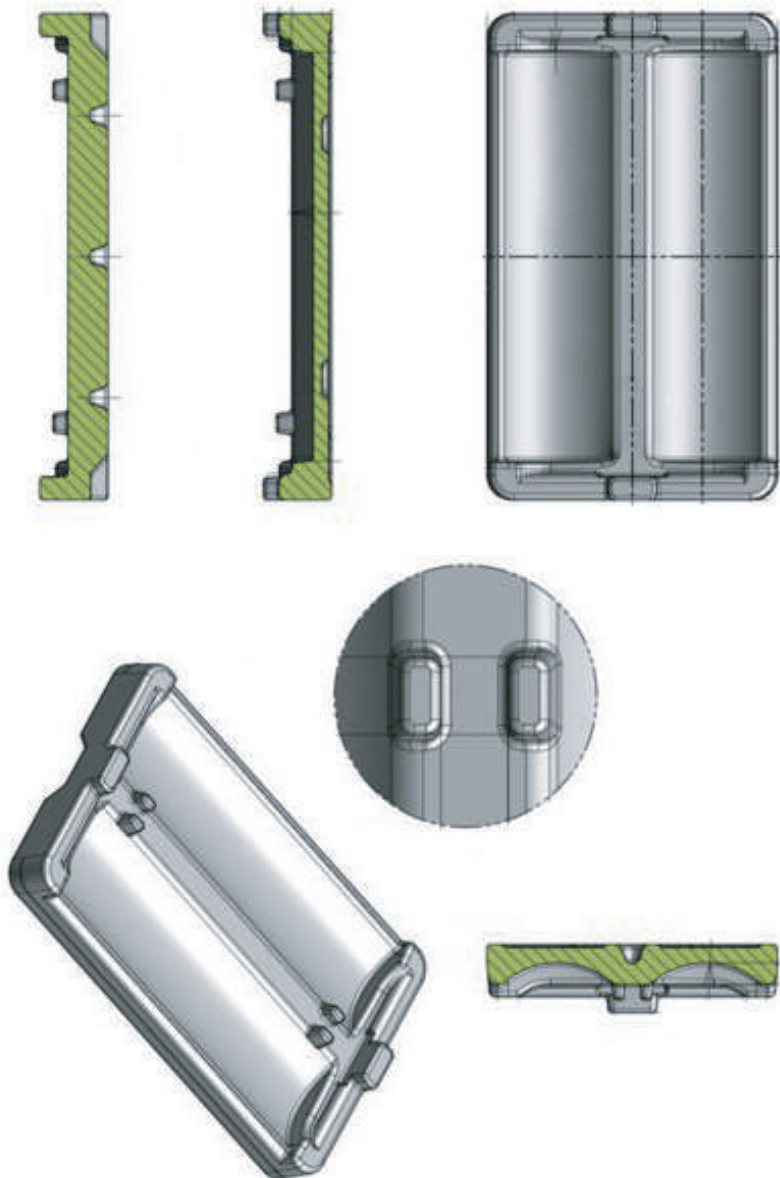
# Parts blueprint TM3

## Plano de piezas TM3



# Transport trolley TM3

## Carretilla de transporte TM3





**01** How the CRB Machine arrives  
Como llega la máquina CRB



**02** Open Box, (always be careful not to cut yourself in removing any packaging)  
Abra la caja, (siempre tenga cuidado de no cortarse al quitar cualquier embalaje)



**03** Remove content  
Retirar el contenido

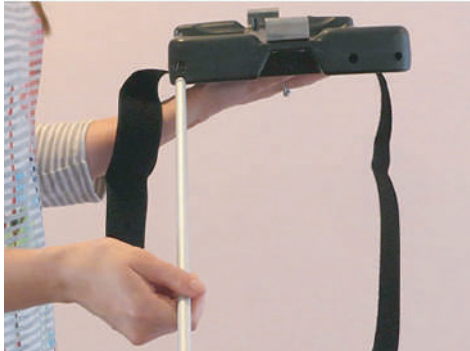


**04** Remove Protective Wrapping on Each Piece  
Retire la envoltura protectora de cada pieza



05

CRB Machine parts set  
Conjunto de piezas de la máquina CRB



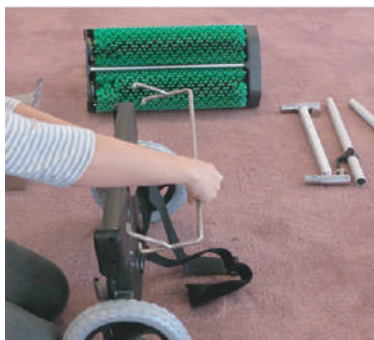
06

Assemble the Transport Trolley, first put axle into a single hole  
Ensamble el carro de transporte, primero coloque el eje en un solo orificio



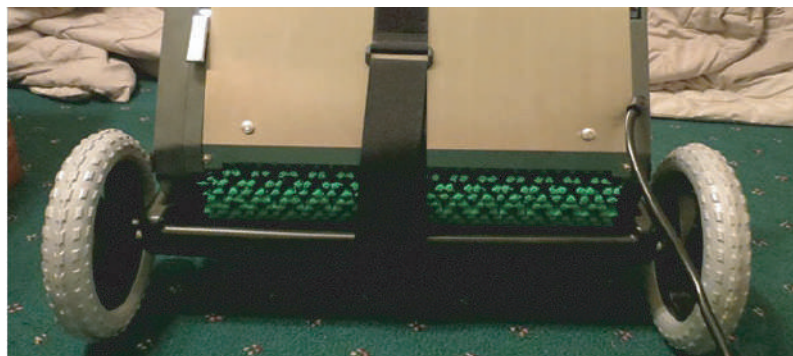
07

Attach Wheels to Axle, push in clip to lock wheels, make sure they lock  
Fije las ruedas al eje, presione el clip para bloquear las ruedas, asegúrese de que se bloqueen



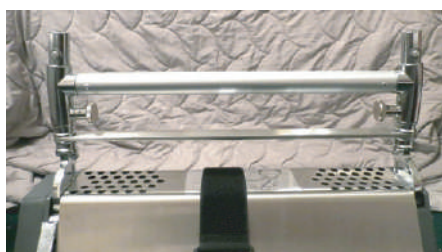
08

Insert front Bar on from of Transport Trolley  
Inserte la barra delantera desde el carro de transporte



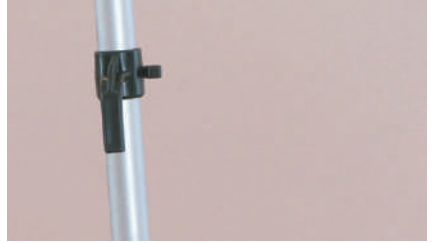
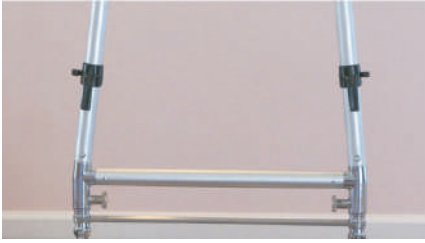
09

Put CRB Machine on Transport Trolley  
Coloque la máquina CRB en el carro de transporte



10

Attach Connecting Bar on Top of CRB Machine é Snap Buttons facing back  
Coloque la barra de conexión en la parte superior de la máquina CRB: los botones a presión están orientados hacia atrás



11

Attach each side of Handle Bars é Push in Snap Buttons to attach é Cord clips are outside  
Fije cada lado de las barras del manillar - Presione los botones a presión para unir - Los clips del cable están afuera



12

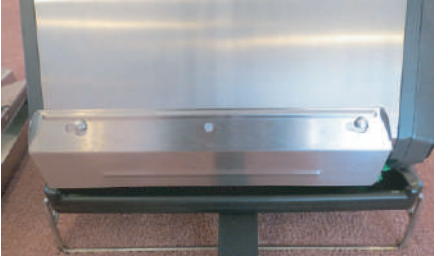
Attach Top Handle Bar é Push in Snap Buttons to attach  
Fije la barra de la manija superior; presione los botones a presión para fijar



13

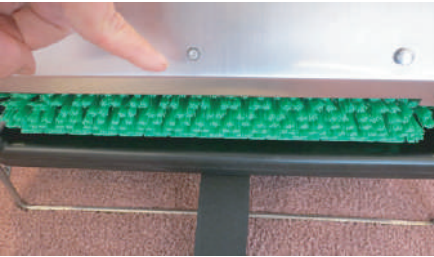
Complete CRB Machine  
Máquina CRB completa

## Attaching Accesorios



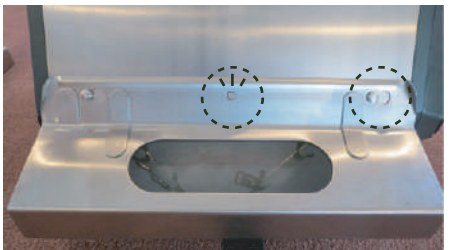
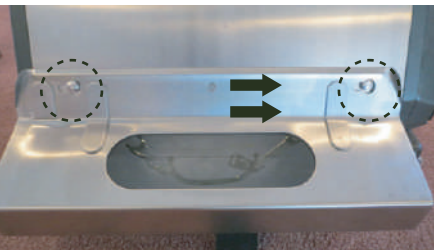
14

Attaching Dust Cover é Pushover Slots and Push Right to Clicked Button  
Colocación de la cubierta antipolvo: ranuras de empuje y empuje el botón derecho al clic.



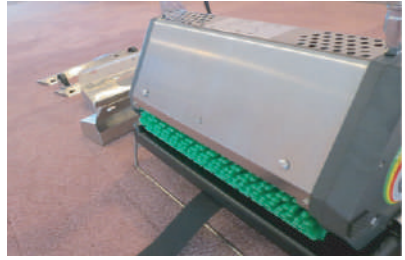
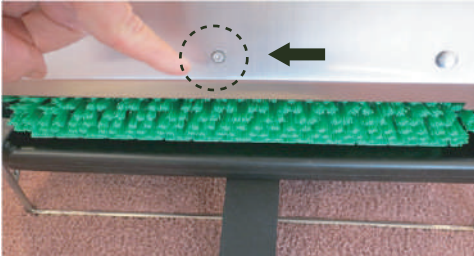
15

Removing Dust Cover é Push Button & Slide Left  
Desmontaje de la cubierta antipolvo: botón y deslice hacia la izquierda.



16

Attaching Receptacles - Pushover Slots and Push Right to Clicked Button  
Colocación de receptáculos: ranuras de empuje y empuje el botón derecho al clic



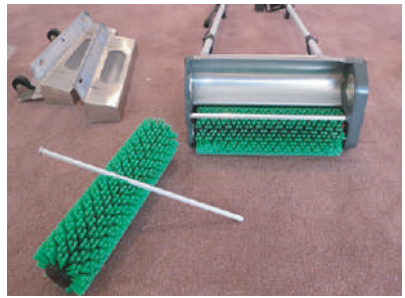
17

Removing Receptacles é Push Button and slide Left  
 Extracción de receptáculos: presione el botón y deslícelo hacia la izquierda



18

Push End of Bar and Slide Out  
 Empuje el extremo de la barra y deslice hacia afuera



19

Align Bar & Brush and Push until it slides all the Through é DO NOT FORCE  
 Alinee la barra y el cepillo y empuje hasta que se deslice completamente- NO FUERCE



DO NOT put the brush axles in backwards as this will damage the flange and gears.  
 NO coloque los ejes del cepillo hacia atrás ya que esto dañará la brida y los engranajes.



20

Mount the handle on the bolt and connect both parts together.

Monte el mango en el perno y conecte ambas partes juntas.



## Starting the machine Encienda la maquina

Push down the start lever on lower left side with your left foot. The motor will automatically start when the handle is pulled back. Place the electric cable in the clip provided on the handle. This will help to protect the cable from the rotating brushes.

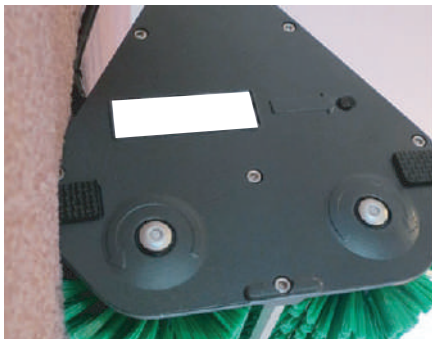
Apretar con el pie el interruptor de seguridad e inclinar el manillar. Enganchar el cable eléctrico en la pinza provista en el manillar. Esto lo protegerá de los cepillos rotativos.



## Motor Safety Switch Dispositivo de Sobrecarga

The safety switch automatically cuts off the electricity if the motor overloads. After approx. 30 seconds press the button inwards and continue to work.

En caso de sobrecarga, el dispositivo cortará automáticamente el suministro eléctrico. Después de 30 segundos apretar el botón y continuar con el trabajo.



# Spare parts TM3/TM4/ TM5

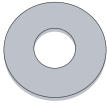
## Partes de repuesto TM3/TM4/ TM5

<p><b>E 1</b></p> 	<p><b>E 2</b></p> 	<p><b>E 3</b></p> 	<p><b>E 5</b></p> 
<p>Snap Ring A10</p>	<p>Ball bearing 6002</p>	<p>TM3/ TM4/ TM5 Distance piece G</p>	<p>Ventilator</p>
<p><b>E 6</b></p> 	<p><b>E 7</b></p> 	<p><b>E 8</b></p> 	<p><b>E 9</b></p> 
<p>TM3/ TM4/ TM5 Motor</p>	<p>TM3/ TM4/ TM5 Distance piece E</p>	<p>TM3/ TM4/ TM5 Transport Trolley Complete</p>	<p>Extension spring</p>
<p><b>E 10</b></p> 	<p><b>E 11</b></p> 	<p><b>E 12</b></p> 	<p><b>E 13-E</b></p> 
<p>Worm screw M3 X 44</p>	<p>Nut M3</p>	<p>Spring Ring M3</p>	<p>Electronic Micro switch</p>
<p><b>E 13-M</b></p> 	<p><b>E 14</b></p> 	<p><b>E 15</b></p> 	<p><b>E 16</b></p> 
<p>Micro switch</p>	<p>Switchpar</p>	<p>M5 X 20 Screw</p>	<p>Nut M5 Self Lock</p>

## Spare parts TM3/TM4/ TM5

### Partes de repuesto TM3/TM4/ TM5

E 17



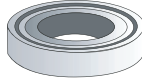
Washer M5

E 18



Cylinder head screw  
M5 x 16

E 19



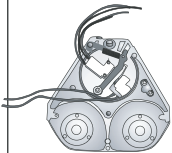
Ball bearing 6003

E 20



Flange

E 21



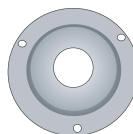
Housing unit E complet

E 22



Retaining Ring A 17

E 23



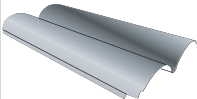
Protective plate

E 24



Motor stud  
TM3/ TM4/ TM5

E 25



Brush cover  
TM3/ TM4/ TM5

E 26



Brush axel  
TM3/ TM4/ TM5

E 27 29 68



Handle connector  
lower part set

E 30



E 31



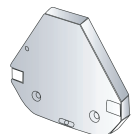
Gear 48 right with  
bearings

E 32



Gear 48 left with  
bearings

E 33



Gearcover

# Spare parts TM3/TM4/TM5

## Partes de repuesto TM3/TM4/TM5

E 34



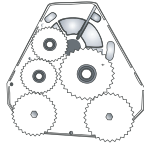
Lock washer M5

E 35



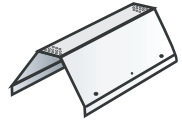
Gear 66 right

E 36



Housing unit G complete

E 37



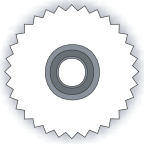
Motor cover  
TM3/TM4/TM5

E 39



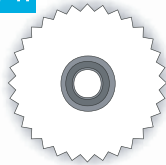
Thermorelay

E 40



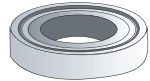
Gear 66 left

E 41



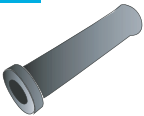
Gear 73 right with  
bearings

E 42



Ball bearing 6000

E 45



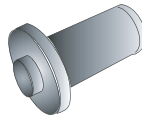
Grommet

E 46



Pig Tail Cable

E 47



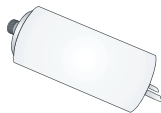
Bearing pin

E 49



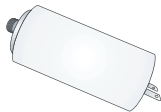
Screw M4 X 12

E 50



Start Capacitor

E 51



Run Capacitor

E 52



Cylinder head screw  
M5 x 30

E 53



Cylinder head screw  
M5 x 45

## Spare parts TM3/ TM4/ TM5

### Partes de repuesto TM3/ TM4/ TM5

E 54



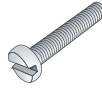
Clamp strip

E 56



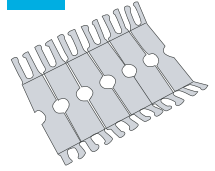
Cable clamp

E 57



Screw M3 x 30

E 58



Wire fixing plate

E 60



Terminal block

E 62



Worm screw

E 63



Nut M4

E 64



Lock washer

E 66



TM3/ TM4/ TM5  
Cable protector

E 69



Handle stop - spring

E 71



Snap ring A 15

E 74



TM3/ TM4/ TM5 Handle  
connector upper part

E 75



TM3/ TM4/ TM5 Flat bar

E 77



Screw M3 x 6

E 79



TM3/ TM4/ TM5 Handle,  
upper part

## Spare parts TM3/TM4/ TM5

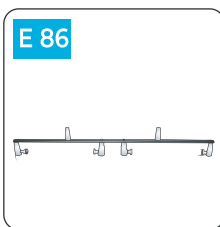
### Partes de repuesto TM3/TM4/ TM5



TM3/ TM4/ TM5 Low Handle  
With Cross Bar



TM3 cross bar  
with handle



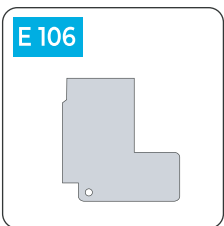
TM3/ TM4/ TM5  
Tandem bar



TM3/ TM4/ TM5 Handle  
complete



TM4 Cylinder Head  
Screw M8 x 25



Isolation plate



Cylinder head screw  
M6 x 14



Spring Ring M



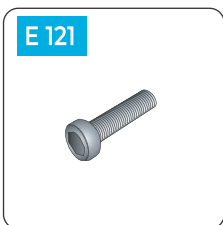
Screw M5 X 12



Snap ring A 10



Screw M6 X 14



Screw M5 X 30



Handle lower part- Left



Handle lower part- Right



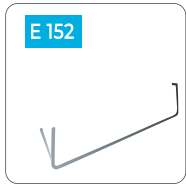
360 Cable holder



Nut & Bolt for renovator

## Spare parts TM3/TM4/TM5

### Partes de repuesto TM3/TM4/TM5



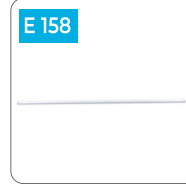
TM3/TM4/TM5 Front up right trolley



Big Trolley wheels



Trolley Belt



TM3/TM4/TM5 Axel for trolley



Trolley metal basket



Trolley plastic pins



Terminal Read Shrouds



Machine side bumpers



Plastic splash proof electronics cover



50ft Extension Cord Black



TM4 Dust Cover without wheels



TM4 Dust Cover with wheels



TM3 Renovator collection Tray



TM4 Renovator collection Tray



TM5 Dust Cover without wheels



TM5 Dust Cover with wheels



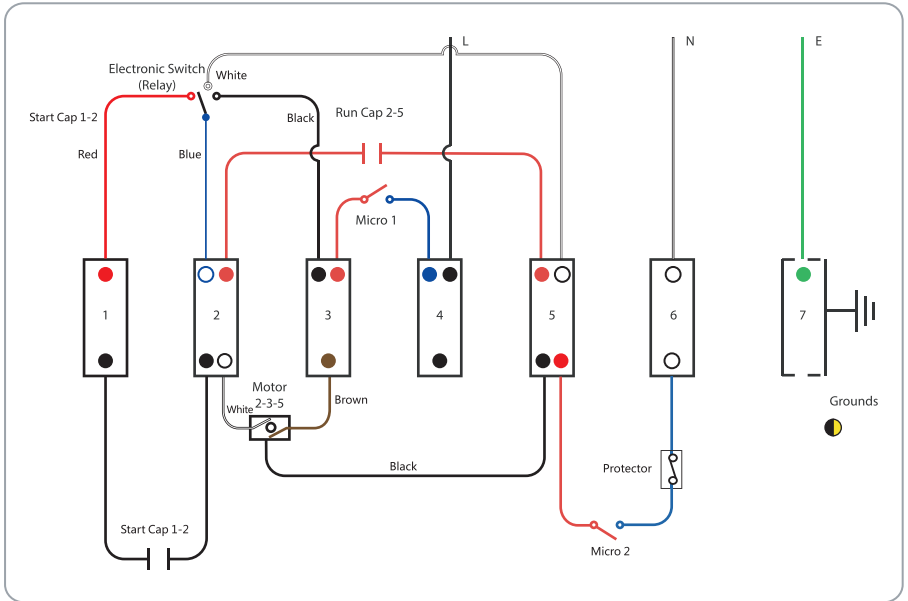
TM5 Renovator collection Tray



Gear Cpl Set

# TM3/TM4/ TM5 Wire diagram

## Diagrama de cableado TM3/ TM4/ TM5



## Spare parts TM3/TM4/ TM5

### Partes de repuesto TM3/TM4/ TM5

# ITEM	DESCRIPTION
E1	Snap Ring A1
E2	Ball bearing 6002
E3	TM4 Distance Piece G
E3-3	TM3 Distance Piece G
E3-5	TM5 Distance Piece G
E5	Ventilator
E6	TM4 Motor
E6-3	TM3 Motor
E6-5	TM5 Motor
E7	TM4 Distance Piece E
E7-3	TM3 Distance Piece E
E7-5	TM5 Distance Piece E
E8	TM4 Transport Trolley Complete
E8-3	TM3 Transport Trolley Complete
E8-5	TM5 Transport Trolley Complete
E9	Extension Spring
E10/11/12	E10 Worm Screw M3*44 kit
E13-M	Micro Switch
E13-E	Electric Switch Controller
E14	Switchpart
E15/16/17	E15 Worm Screw M5 Kit
E18	Cylinder Head Screw M5*16
E19	Ball Bearing 6003
E20	Flange
E21	Housing Unit E cpl.
E22	Retaining Ring A17
E23	Protective Plate
E24	TM4 Motor Stud
E24-3	TM3 Motor Stud
E24-5	TM5 Motor Stud
E25	TM4 Brush Cover
E25-3	TM3 Brush Cover
E25-5	TM5 Brush Cover
E26	TM4 Brush Axel
E26-3	TM3 Brush Axel
E26-5	TM5 Brush Axel

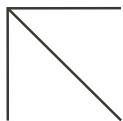
# ITEM	DESCRIPTION
E27 29 68	SS Handle Connector Lower Part Set
E30	Screw M6*16
E31	Gear 48 Right
E32	Gear 48 Left
E33	Gearcover
E34	Lock Washer M5
E35	Gear 66 right
E36	Housing Unit G cpl.
E37	TM4 Motor Cover
E37-3	TM3 Motor Cover
E37-5	TM5 Motor Cover
E39	Thermorelay
E40	Gear 66 Left
E41	Gear 73 Right with Bearings
E42	Ball bearing 6000
E45	Grommet
E46	Pig Tail Cable
E49	Screw M4*12
E50	Start Capacitor TM3/4/5
E51	Run capacitor TM4
E51-3	Run capacitor TM3
E51-5	Run capacitor TM5
E52	Cylinder Head Screw M5*30
E53	Cylinder Head Screw M5*45
E56	Cable clamp
E57	Screw M3*30
E58	Wire fixing plate
E57	Screw M3*30
E58	Wire Fixing plate
E60	Terminal Block
E61	V-ring
E64	Lock washer
E66	TM4 Cableprotector
E66-3	TM3 Cableprotector
E66-5	TM5 Cableprotector

# ITEM	DESCRIPTION
E69	Handle stop spring
E71	Snap Ring A15
E74	TM4 Handle Connector Upper Part
E74-3	TM3 Handle Connector Upper Part
E74-5	TM5 Handle Connector Upper Part
E75	Flat Bar TM4
E75-3	Flat Bar TM3
E75-5	Flat Bar TM5
E77	Screw M3*6
E79	TM4/5 Handle Upper Part
E79-3	TM3 Handle Upper Part
E83	TM4/5 Lower Handle Part
E83-3	TM3 Lower Handle
E86	Tandem Bar TM4
E86-5	Tandem Bar TM5
E88	TM4/ TM5 Handle Complete
E95	Spring Ring
E96	TM4 Cylinder Head Screw M8*25
E96-3	TM3 Cylinder Head Screw M8*16
E96-5	TM5 Cylinder Head Screw M8*16
E106	Isolation Plate
E113	Cylinder Head Screw M6 * 14
E116	Spring Ring M3
E118	Screw
E120	Screw M6*14
E121	Screw M5*30
E122	Handle Lower Part- Left

# ITEM	DESCRIPTION
E123	Handle Lower Part- Right
E126	360 Cable Holder
E151	Nut & Bolt For Renovator
E152	TM4 Front Up Right Trolley
E152-5	TM5 Front Up Right Trolley
E153	Big Trolley Wheel
E155	Trolley Belt
E156	Tray Includes Clips TM4
E156-3	Tray Includes Clips TM3
E156-5	Tray Includes Clips TM5
E158	TM4 Axel for Trolley
E158-5	TM5 Axel for Trolley
E163	Trolley Metal Bracket
E164	Trolley Plastic Pins
E165	Terminal Rear Shrouds
E166	Machine Side Bumpers
E167	Plastic Splash Proof Electronic Cover
E200	Gear cpl Set
PC50	50ft Extension Cord Black
X3B	TM3 Dust Cover without wheels
X3B/W	TM3 Dust Cover with wheels
X3E	TM3 Renovator Collection Tray
X4B	TM4 Dust Cover without wheels
X4B/W	TM4 Dust Cover with wheels
X4E	TM4 Renovator Collection Tray
X5B	TM5 Dust Cover without wheels
X5B/W	TM5 Dust Cover with wheels
X5E	TM5 Renovator Collection Tray



**CRB** Cleaning Systems  
a **CRB International Company**



# CRB Cleaning Systems

---

CRB Cleaning Systems guarantees efficient carpet and hard surface cleaning solutions to all our customers with our state of the art CRB machinery and chemistry providing our clients with 100% guaranteed satisfaction.